



REFLECTIVE
BUBBLE INSULATION

ULTIMATE HEAT SHIELDING

MAXIMUM EFFICIENCY



THE ALUTIX DIFFERENCE

Air bubble insulation is a type of thermal insulation material that consists of multiple layers of air-filled bubbles, typically sandwiched between layers of reflective aluminum foil. This design provides effective thermal resistance, making it an excellent choice for various applications where temperature regulation and energy efficiency are important.

Alutix operates at the highest level of business practices and ethical standards and we operate within the stringent disciplines of the ISO 9001:2015 Quality Management System.

We pride ourselves on our experience, training and expertise in the thermal insulation marketplace, backed by a range of quality product offerings. We keep abreast of changes and developments in the building industry and environmental issues, Alutix Insulations enjoys the enviable position of being the de facto standard and market leader in building insulation products, consisting of sealed plastic bubbles laminated to an aluminium foil, throughout India.

Our production process uses the most efficient method of manufacturing insulation material which helps us to offer superior & consistent quality products at a competitive price.

We offer Air Bubble Insulation in both standard rolls and in special lengths, which ensures the most efficient usage of the material. This offer provides our customers with significant cost savings associated with the reduction in waste material (off-cuts).

Our Values - Quality Excellence, Innovation, Sustainability, Customer Focus, Integrity, Teamwork, and Safety drive our commitment to superior products and lasting relationships.

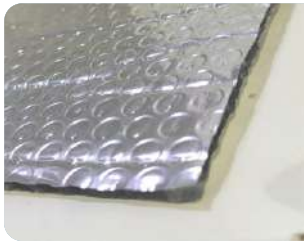


Our Mission is to bring values for our customers , by developing good working relationships & ultimately serving better.

Our Vision is to set a benchmark in the Insulation industry by providing the highest quality products and the best service.

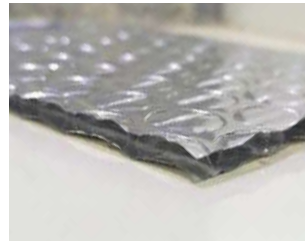


REFLECTIVE BUBBLE INSULATION- SIZES AND COMPOSITION



Thickness : 4 mm
Bubble size : 4x10 mm
Air bubble layer : Single
Roll size : 1.2x40 mtr.
Pure Aluminum Foil
Lamination on Both side

ALUTIX VICTOR 4 MM



Thickness : 6 mm
Bubble size : 6x18 mm
Air bubble layer : Single
Roll size : 1.2x40 mtr.
Pure Aluminum Foil
Lamination on Both side

ALUTIX CLASSIC 6 MM



Thickness : 8 mm
Bubble size : 4x10 mm
Air bubble layer : Double
Roll size : 1.2x40 mtr.
Pure Aluminum Foil
Lamination on Both side

ALUTIX STAR 8 MM



Thickness : 10 mm
Bubble size : 10x30 mm
Air bubble layer : Single
Roll size : 1.2x40 mtr.
Pure Aluminum Foil
Lamination on Both side

ALUTIX NOBLE 10 MM



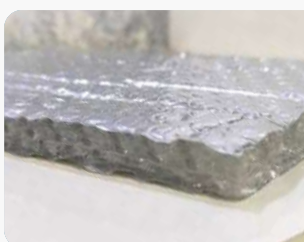
Thickness : 12 mm
Bubble size : 6x18 mm
Air bubble layer : Double
Roll size : 1.2x30 mtr.
Pure Aluminum Foil
Lamination on Both side

ALUTIX MASTER 12 MM



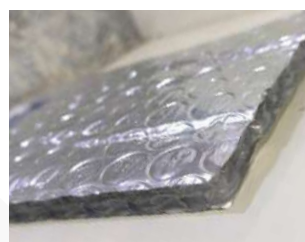
Thickness : 12 mm
Bubble size : 4x10 mm
Air bubble layer : Tripple
Roll size : 1.2x25 mtr.
Pure Aluminum Foil
Lamination on Both side

ALUTIX TRIO 12 MM



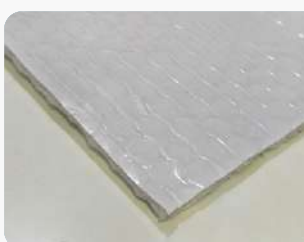
Thickness : 16 mm
Bubble size : 4x10 mm
Air bubble layer : Four
Roll size : 1.2x25 mtr.
Pure Aluminum Foil
Lamination on Both side

ALUTIX PRO 16 MM



Thickness : 20 mm
Bubble size : 10x30 mm
Air bubble layer : Double
Roll size : 1.2x25 mtr.
Pure Aluminum Foil
Lamination on Both side

ALUTIX PRIME 20 MM



Thickness : All thickness
Bubble size : 4mm
Air bubble layer : Single/Double
Roll size : Can Be customised
laminated with one side Alum foil
and one side Poly

ALUTIX POLY



Thickness : All thickness
Bubble size : 4mm
Air bubble layer : Single/Double
Roll size : Can Be customised
laminated with one side Alum foil
and one side Metpet

ALUTIX ALUMET

APPLICATIONS



Industrial / Factory Shed



Poultry Farms



Sports Complex



Innovative Packaging



Banquets / Showrooms



Goods Vehicles

Thermal insulation effectively reduces the cooling load of a building by minimizing heat transfer between the interior and exterior. This helps maintain a stable indoor temperature, reducing the need for air conditioning and lowering energy consumption. Additionally, thermal insulation protects occupants, processes, and equipment from harsh weather conditions by providing a barrier against extreme temperatures, which enhances comfort and safety.

PLUS POINTS



Light Weight



Lowers Heating And Cooling Costs



Easy to Retrofit



Moisture Barrier



Inhibits Condensation



Fiber - Free



Flexible & Versatile



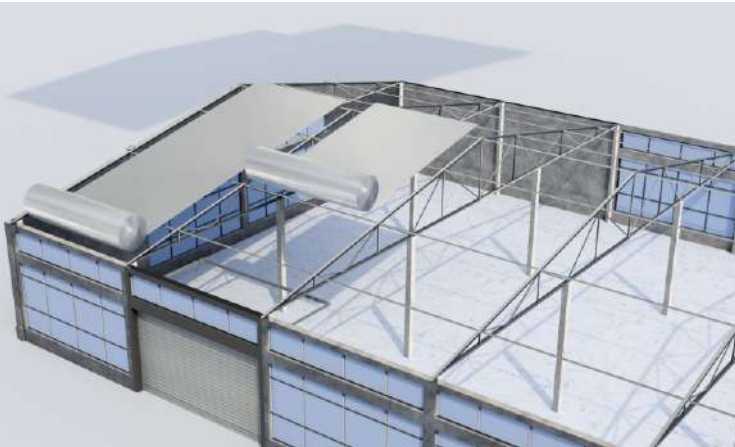
Non Toxic & Environment Friendly



Cost Effective

INSTALLATION GUIDE

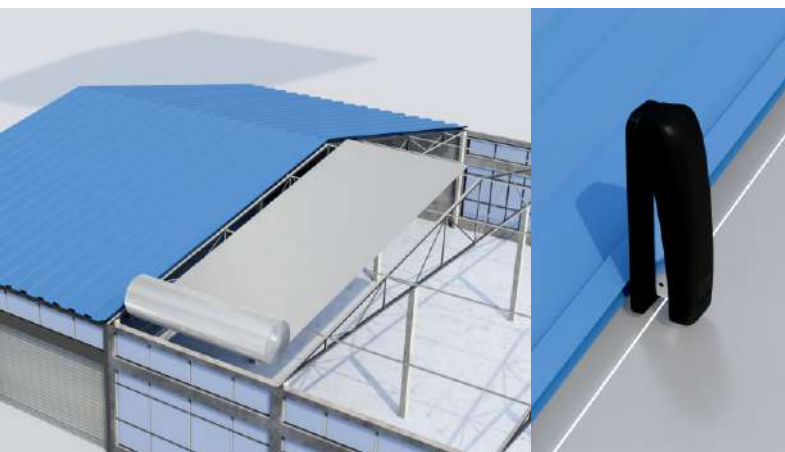
Alutix Insulation products are a group of technologically advanced materials. They are ideal for new construction or retrofit applications in commercial, industrial, metal and post/frame buildings, along with many other DIY applications. When you think of insulation, you should think of Alutix. Our products are recognised for their thermal performance, easy installation, versatility and price.



Unroll the insulation sheet from bridge to eave, stretch and fix the insulation sheet with drilling screws.



Place the metal sheet on the top of insulation sheet and fix with metal screws.



On placing the next sheet parallel to the first, making the side overlap and staple the edges together.



In case of installation In a Existing metal shed, stretch the insulation sheet as wide as the purlins spacing, just below the roof sheet and fixate with GI wire.

Items needed for installation

- Scissors or a sharp utility knife to cut the product
- Insulation Tape to seal the seams
- Stapler for Edge attachment
- Gi Wire is required for proper Installing the Insulation material between the cross purlins with a distance of 400mm — 500mm. It can be installed easily without removing the Profile Sheets under the roof.



NEW SHED



OLD SHED

NOTE : Installation instructions and illustrated drawings are recommendations only, while proper local construction methods are the responsibility of the installer.

SOME OF OUR PRESTIGIOUS CLIENTS



Corporate Office: No 2, 1st floor, Shahzada Bagh Opp Metro Pillar, 187-188, New Delhi - 110035

Manufacturing Plant 1 : Khasra No. 83, 85, 84/1 84/3 & 89, Village Gaitra, Tehsil Tilda,
Distt. Raipur, Chhattisgarh.

Manufacturing Plant 2 : Plot No. E-51, RIICO Industrial Area, Karoli, Bhiwadi,
Distt. Alwar, Rajasthan- 301019

Storage Locations : Gujarat, Karnataka, Tamilnadu, Punjab, Rajasthan, Maharashtra , Haryana

info@alutix.com | www.alutix.com
+918448583060 | +919899895603



Download Brochure